



CRINOLINE

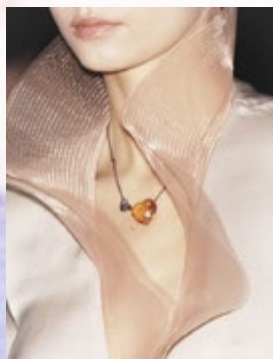
Crinoline, Also known as horsehair and mohair, is a nylon weave fabric that is easier to shape, often use in decorating hats and trimmings. It was originally used in 16th century Europe in upper-class fashion, often to support the

elaborate gowns worn on a daily basis, in modern society, it is most commonly found in accessory embellishment, bridal gowns, fascinators, millinery, dancing dress and other luxurious attire. Sun Yorkos are proudly to present

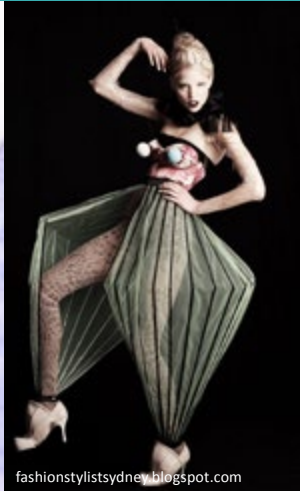
Zoria Crinoline, with full line of collections in vast colors, styles that meets your imaginations and design, We provide most varieties with the quality you can trust for decades.

Fashion Looks

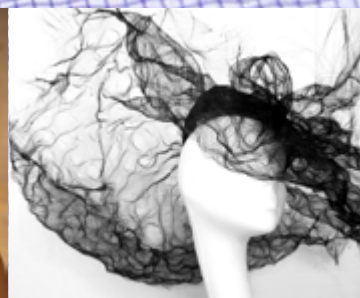
Unexpected avant-garde way of dressing!



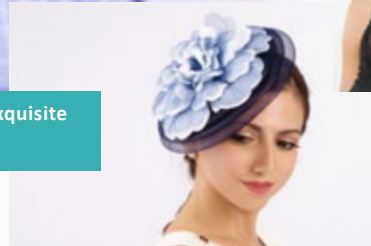
Elegant with Style collar band made out.

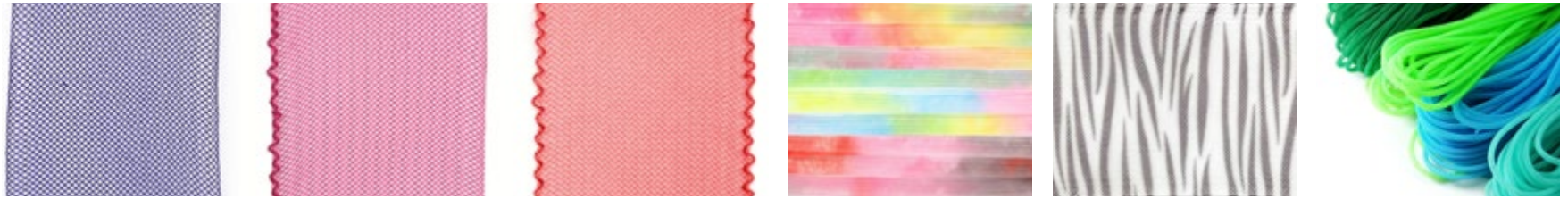


fashionstylistsydney.blogspot.com



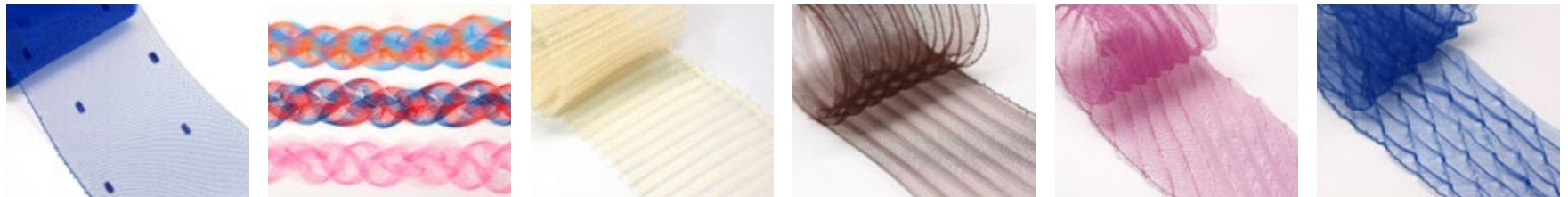
Great element for exquisite designs.





CRINOLINE

	AD22N	AD22	AD22ZC2	AD22MT	AD22PT	AD22T
WIDTH	*3/16" , 5/16" , 5/8" SIZE AD22N ONLY 3/16" , 5/16" , 5/8" , 1" , 1-1/2" , 2" , 3" , 4" , 5" , 6" , 8"			5/16" , 5/8" , 1" ~ 6"	2 ~ 6"	1/8" , 2/8" , 3/8" , 6/8"
LENGTH	144YD	72YD	36YD	36YD	36YD	36YD
THREAD OF EDGE NONE/SINGLE /DOUBLE	NONE	SINGLE	DOUBLE	SINGLE	SINGLE	X
CHARACTERIZED	BASIC STYLE	BASIC STYLE	BASIC STYLE	GRADIENT COLORS	VARIOUS PATTERN	TUBE
COMPONENT	POLYESTER	POLYESTER	POLYESTER	POLYESTER	POLYESTER	POLYESTER



CRINOLINE

	AD228	AD22N-3P	AD22P	AD22PV	AD22PV-1	AD222PV-1
WIDTH	3" ~ 8"	5/16"	3" , 4" , 6"	4 / 4-1/2"	4 / 4-1/2"	4 / 4-1/2"
LENGTH	36YD	72YD	18YD	30 Inch	30 Inch	30 Inch
SIDELINE NONE/SINGLE /DOUBLE	V	NONE	SINGLE	SINGLE	SINGLE	SINGLE
CHARACTERIZED	WITH DOT	TRIPLE BRAIDED	HORIZONTAL PRESS	VERTICAL PRESS	SLASH PRESS	VERTICAL & SLASH PRESS
COMPONENT	POLYESTER	POLYESTER	POLYESTER	POLYESTER	POLYESTER	POLYESTER

* All of crinoline width less than 1 inch (exclude 1 inch) can't make single or double eage.